



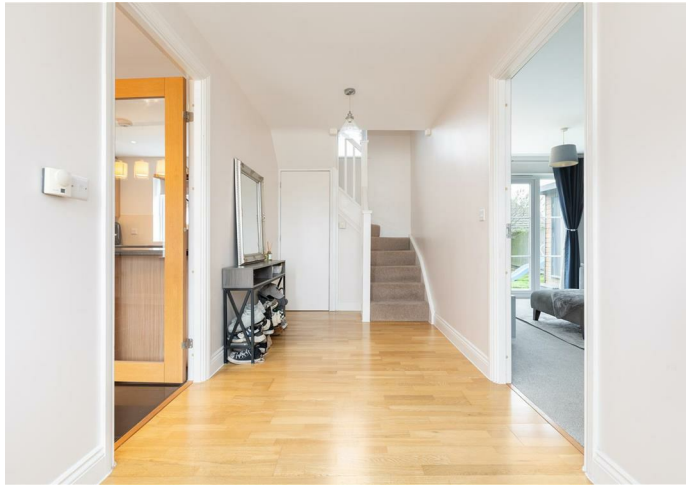
House - Detached

**5 LITTLE CLOSE, ARLESEY,
BEDFORDSHIRE, SG15 6AB**

PCM
£1,600

FEATURES

- *** Beautifully presented 3 double bedroom family home ***
- Kitchen/Diner & separate utility room
- large rear garden
- Easy access to train lines and local amenities
- EPC Band C
- *** Bathroom with separate shower room ***
- Dual aspect lounge
- Garage with driveway
- Council Tax Band E
- ** MUST VIEW, AVAILABLE EARLY MARCH **



3 Bedroom House - Detached located in Arlesey

Nestled in the tranquil Little Close of Arlesey, this beautifully presented modern detached family home offers a perfect blend of comfort and style. With three well-proportioned bedrooms, including one featuring built-in wardrobes, this residence is ideal for families seeking space and convenience. The property boasts two bathrooms, comprising a family bathroom and a handy downstairs shower room, ensuring ample facilities for all.

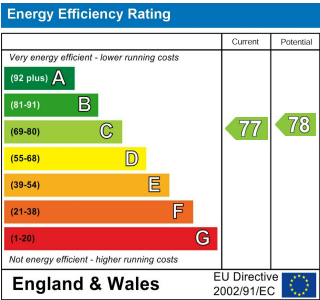
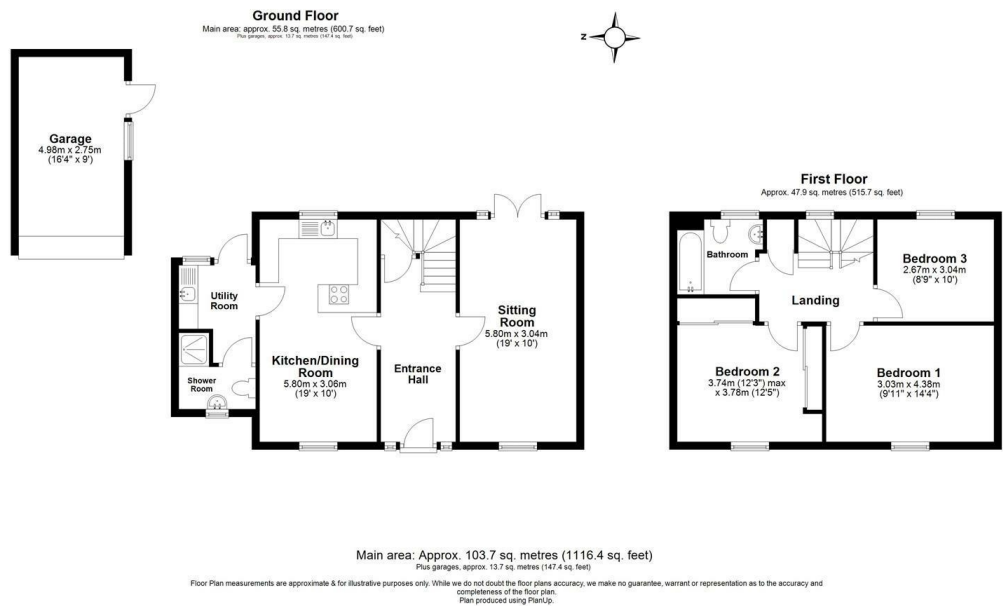
The heart of the home is a generous kitchen/diner, with eye line double oven, integrated dishwasher, gas hob and overhead extractor fan, perfect for family meals and entertaining guests. Adjacent to this, a separate utility room provides practical access to the garden, making chores a breeze. The spacious dual aspect lounge, enhanced by French doors, invites natural light and offers a seamless transition to the outdoor space, ideal for enjoying sunny days.

Outside, the garden is complemented by a patio area, and a secure shed, providing additional storage, while a single garage with side access further enhances the practicality of this home. The driveway accommodates parking for two vehicles, ensuring convenience for family and visitors alike.

Call us on
01462 659 730

rentals@firststep.ltd
www.firststep.ltd

Council Tax Band
E



Agents Note: Whilst every care has been taken to prepare these particulars, they are for guidance purposes only. All measurements are approximate and are for general guidance purposes only and whilst every care has been taken to ensure their accuracy, they should not be relied upon and potential buyers are advised to recheck the measurements.